

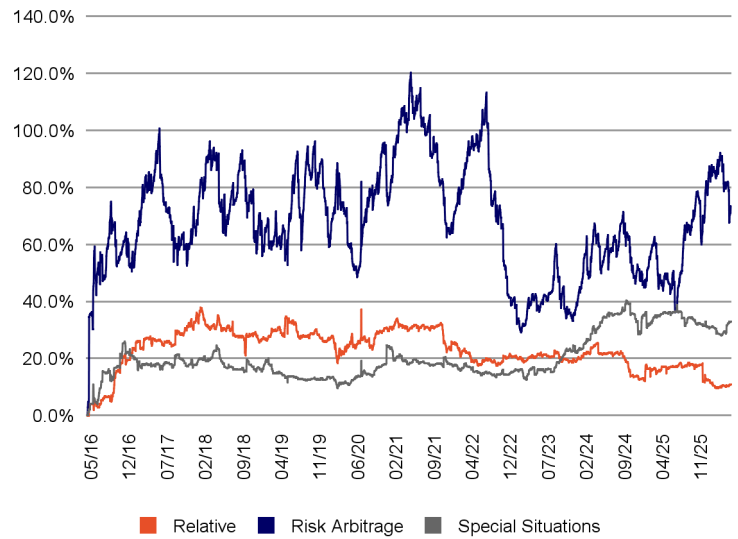
Monthly review

Leadersel Event-Driven's performance in May was primarily attributable to the strong performance of special situations, a month in which risk arbitrage and relative value positions, while generally showing moderate movements, were impacted by short-term market dynamics that reduced their contribution. In detail, in risk arbitrage, on the European front, highlights included the finalization of the conversion of Telecom savings shares into ordinary shares, a transaction that allowed for significant tax advantages on the cash adjustment, and the formalization of the offer for Recordati by CVC, the pharmaceutical company's reference shareholder. In the US portfolio, attention was focused on the acquisition of Allied Gold Corp by China's Zijin Gold, still awaiting the necessary approvals, complicated by the current unrest in Mali. Turning to special situations, Technoprobe made significant contributions, following the presentation of highly encouraging results, accompanied by rumors regarding the possible addition of an industrial partner to the Crippa family, the current controlling shareholder, and its investment portfolio in companies exposed to the renewable energy sector. Also noteworthy is Eni's retracement, amid hopes for an imminent reopening of the Strait of Hormuz. Finally, in relative value, despite the strong performance of the European banks' portfolio, thanks primarily to Deutsche Bank and Santander, the discount on Danieli savings shares compared to ordinary shares widened significantly, likely driven by rebalancing at the end of the month. Regarding asset allocation, the risk arbitrage component was reduced due to the completion of the conversion of Telecom savings shares into ordinary shares, in an operating environment that nevertheless allowed exposure to remain around 170% of the fund's assets.

Portfolio Breakdown

Relative Value	20.65%
Risk Arbitrage	60.96%
Special Situation	18.38%
Total	100.0%

Portfolio's Historical Weight



Key fund information

Assogestioni category	Alternative
Inception date	28/04/2017
Nav (Euro)	117.820
Strategy AUM (in Euro)	279,441,825
Benchmark	

Performance	Fund
YTD	0.90%
Last week	-0.28%
Last month	0.51%
Last 3 months	0.60%
1 year	3.93%
3 years (*)	4.64%
5 years (*)	1.43%
Since inception (*)	1.82%
(*) Compound annual return	

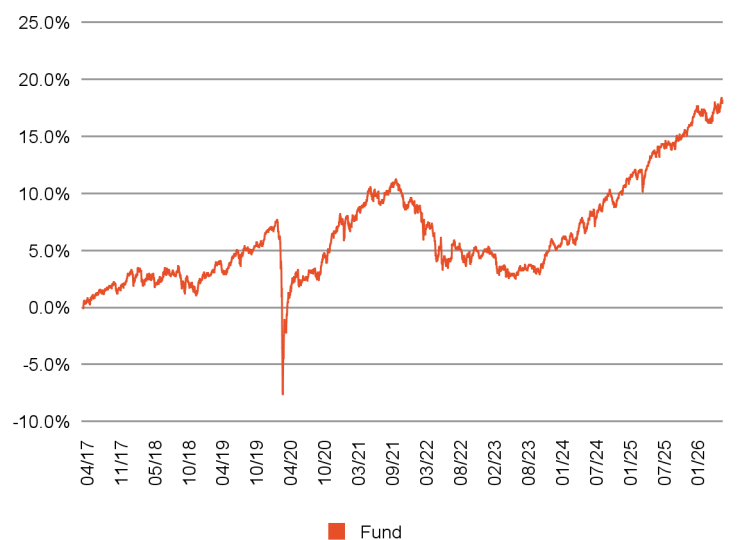
Risk statistics

Volatility to date	3.70%
--------------------	-------

Portfolio Composition

Portfolio	Strumento	Long	Short	Net
Relative Value	Credit	-	-	-
	Equity	11.0%	10.1%	0.9%
Risk Arbitrage	Credit	-	-	-
	Equity	75.7%	12.4%	63.3%
Special Situations	Credit	24.2%	-	24.2%
	Equity	5.9%	1.0%	4.9%
Total		116.8%	23.5%	93.3%

Performance



Return (net of fees)

	1	2	3	4	5	6	7	8	9	10	11	12	YTD
2026	0.20%	0.10%	-0.68%	0.77%	0.51%								0.90%
2025	0.80%	0.60%	-0.12%	0.24%	1.19%	0.48%	0.01%	0.17%	0.24%	0.51%	0.58%	0.79%	5.61%
2024	-0.34%	0.50%	0.28%	-0.39%	1.79%	-0.40%	1.13%	0.42%	0.59%	-0.22%	0.19%	0.81%	4.44%
2023	0.46%	-0.33%	-1.33%	0.30%	-0.68%	0.02%	0.44%	0.34%	-0.10%	-0.07%	0.98%	1.22%	1.23%
2022	-0.62%	-0.46%	-0.91%	-0.70%	-1.13%	-1.10%	0.21%	0.89%	-1.24%	0.86%	0.20%	-0.51%	-4.46%
2021	-1.02%	0.56%	0.95%	1.00%	0.96%	0.07%	-0.66%	0.63%	0.68%	0.07%	-1.73%	0.57%	2.05%
2020	-0.02%	-0.66%	-7.19%	3.09%	1.55%	-0.72%	0.65%	0.25%	-0.08%	0.82%	2.37%	0.75%	0.45%
2019	1.39%	-0.11%	0.56%	0.74%	-1.01%	0.89%	0.87%	0.28%	-0.08%	0.39%	0.10%	1.07%	5.20%
2018	0.84%	0.34%	-1.16%	0.63%	-0.90%	0.55%	0.81%	-0.30%	0.08%	-0.77%	-0.57%	-0.32%	-0.80%
2017					0.39%	0.00%	0.88%	0.27%	0.22%	0.38%	-0.45%	0.62%	2.32%

Fund technicals

Management Company	Ersel Gestion Internationale SA
Investment Manager	Ersel Asset Management Sgr SpA
Custodian bank	Caceis Bank Luxembourg SA
Independent auditors	Ernst & Young S.A.
Offices of Ersel Group	Piazza Solferino, 11 - 10121 Torino + 39 01155201
Base currency	Euro
ISIN code	LU1492667982
Bloomberg code	LEADED LX
Frequency of NAV calculations	Daily
Performance Fee	20% of the difference between the last NAV of the week of reference and the last NAV of the previous week or the highest NAV of any other previous weeks if higher. The performance fee is not due if the last NAV of the week of reference is higher than the NAV of the previous week, but at the same time lower than or equal to the NAV of any other previous weeks.

Investment objective

Leadersel Event Driven aims to achieve positive absolute returns with moderate volatility and low market correlation. The fund invests primarily in equity instruments, bonds, and derivatives of companies involved in mergers, acquisitions, spin-offs, or more generically "special situations", using a combination of strategies and favouring those least related to the general performance of markets.

Isin	Currency	Min.initial Subs.	Mgmt. fee	AUM (mln€)
LU1492667982	Euro	2.000.000 euro	1%	98.51
LU1323913191	Euro	2.500 euro	1,5%	64.72
IT0003496988	Euro	500.000 euro	1,5%	116.21
Total				279.44

Risk level

1	2	3	4	5	6	7
---	---	---	---	---	---	---

The synthetic risk indicator assumes that the product is held for 5 years and is an indicative indication of the level of risk of this product compared to other products.

General notices

Marketing Communication. This document is intended for information/marketing purposes only and does not replace the prospectus or other legal documents on financial products that may be referred to herein. If necessary, please consult the UCITS prospectus/disclosure document and the Key Investor Document (KID) before making a final investment decision, which can only be made after assessing the suitability of the service or financial instrument with respect to the profile identified with the MiFID questionnaire. Only the most recent version of the fund's prospectus, regulations, Key Investor Document, annual and semi-annual reports may be used as a basis for investment decisions. This document constitutes neither an offer nor a solicitation to buy, subscribe or sell financial products or instruments or a solicitation to make investments. Ersel has carefully reviewed all information presented in this document and made efforts to ensure that the content of this document is based on information and data obtained from reliable sources, but does not guarantee its accuracy or completeness and does not assume any liability. Ersel assumes no responsibility for the information, projections or opinions contained herein and shall not be liable for any use that third parties may make of such information or for any losses or damages that may occur as a result of such use. This document may refer to past investment performance: past performance is not indicative of current or future performance. The indications and data on the financial instruments, as provided by the Company, do not necessarily constitute an indicator of the future investment or disinvestment prospects. Any reproduction and/or distribution of this document that is not expressly authorised is prohibited.