

**Monthly review**

In April 2026, bond markets experienced a partial adjustment, albeit within a framework that remains affected by the legacy of the volatility observed in March. Although the geopolitical escalation in the Gulf failed to show further peaks in intensity, investor sentiment remained extremely cautious, reflecting only partial digestion of the energy shocks. Core rates tended to drift sideways at elevated levels: downward pressure stemming from the search for quality was offset by concerns about sticky inflation, fueled by still-tight commodity prices. On the credit front, spreads narrowed modestly in high-quality segments, while selectivity toward issuers most exposed to refinancing costs remained evident. From a macroeconomic perspective, the resilience of global economic activity continued to surprise, but simultaneously reinforced the narrative of central banks being less inclined to lend. In some countries, especially those that are net importers of hydrocarbons, the approach will need to be more pragmatic and, initially, rising inflation will need to be factored in. Given this scenario, we have adopted a more defensive approach to the fund, maintaining duration underweight by almost a year and reducing exposure to Asia.

**Key fund information**

Assogestioni category	Obbligazionario Flessibile
Inception date	10/10/2025
Nav (Euro)	99.820
AUM (in Euro)	235,643
Benchmark	100% ICE BofA US Investment Grade Emerging Markets External overreign Index (DGI)

Past performance is not indicative of current or future results.

Performance	Fondo	Benchmark
YTD	-0.88%	-0.67%
Last week	-0.47%	-0.48%
Last month	1.40%	1.35%
Last 3 months	-0.69%	-0.25%
1 year	-	-
3 years (*)	-	-
5 years (*)	-	-
Since inception (*)	-0.18%	-0.24%

(\*) Compound annual return

**Risk statistics**

Standard deviation	4.25%	Sharpe ratio	-0.36
Standard deviation bench	4.22%	Information ratio	0.21
VaR	-7.01%	Beta	0.98
Tracking error volatility	0.90%	Correlation	0.98
Average fund duration	7.00	Yield to maturity (YTM)	5.62%

**Asset class**

Bonds	95.5%
Liquidity	4.5%
<b>Total</b>	<b>100.00%</b>

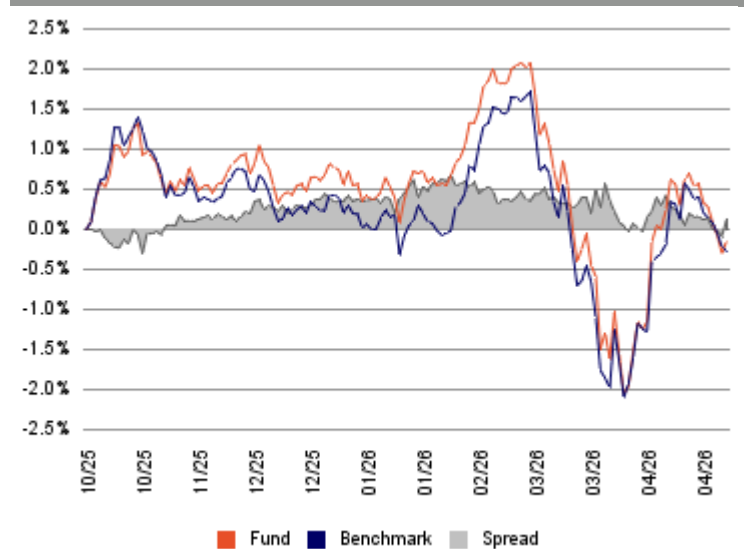
**Currency exposure**

	Gross exp.	Coverage	Net exp.
Dollar	74.5%	-77.4%	-2.9%
Euro	25.4%	77.4%	102.7%
Emerging countries	0.1%	-	0.1%
<b>Total</b>	<b>100.0%</b>	<b>-</b>	<b>100.0%</b>

**Bond portfolio structure**

	Bond	Deriv	Total
Emerging countries	88.9%	-	88.9%
America	5.7%	-	5.7%
Europe ex Italy	0.9%	-	0.9%
Italy	-	-	-
<b>Total</b>	<b>95.5%</b>	<b>0.0%</b>	<b>95.5%</b>

**Performance over last year**



Rating classes	Corp	Govt	Total
AA	-	5.7%	5.7%
A	-	9.4%	9.4%
BBB	-	59.5%	59.5%
BB	-	20.0%	20.0%
B	-	0.8%	0.8%
NO RATING	-	0.1%	0.1%
<b>Total</b>	-	<b>95.5%</b>	<b>95.5%</b>

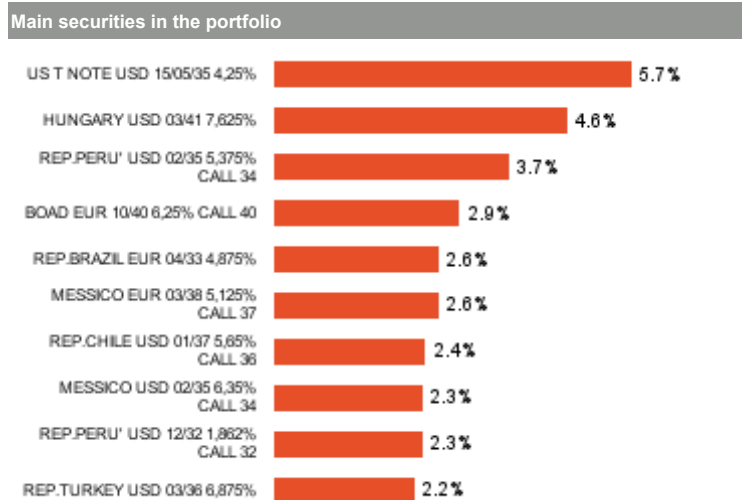
Duration classes			
0 - 0,5 anni	0.0%	3 - 5 anni	10.4%
0,5 - 1 anni	0.0%	5 - 7 anni	27.3%
1 - 2 anni	0.7%	7 - 10 anni	50.8%
2 - 3 anni	1.8%	Oltre 10 anni	9.0%

Fund technicals	
Management Company	Ersel Gestion Internationale SA
Investment Manager	Ersel Asset Management Sgr SpA
Custodian bank	Caceis Bank Luxembourg SA
Independent auditors	Ernst & Young S.A.
Offices of Ersel Group	
Base currency	Euro
ISIN code	LU3053688902
Bloomberg code	LEAHCRR LX
Frequency of NAV calculations	Giornaliera
NAV published on:	

Share class facts	
Minimum investment	2.500 euro
Subsequent investments	
Subscription fees	
Redemption fees	0
Management fees	0,8% on an annual basis
Performance fees	20% on overperformance recorded by the benchmark

Risk level						
1	2	3	4	5	6	7

The synthetic risk indicator assumes that the product is held for 5 years and is an indicative indication of the level of risk of this product compared to other products.



**Investment objective**

The fund is actively managed and its investment objective is to achieve capital growth by primarily investing in bonds or other fixed-income securities of a similar nature. The sub-fund applies a benchmark composed of the ICE BofA US Investment Grade Emerging Markets External Sovereign Index and may also invest in securities not included in the index or in different weightings. It can maintain a significant exposure to the US dollar and may additionally invest in any other fixed-income or credit instruments, whether fixed or floating rate, of any maturity, as well as convertible bonds, securities rated below Investment Grade or unrated, contingent convertible bonds (CoCos), distressed and defaulted debt securities in aggregate, bonds traded on the Chinese interbank bond market, and money market instruments with maturities of less than 12 months. To implement its investment strategy, the sub-fund may use derivative instruments not only for hedging purposes. Investment decisions are made on a discretionary basis. The sub-fund's net asset value (NAV) is calculated and expressed in euros.

**General notices**

Marketing Communication. This document is intended for information/marketing purposes only and does not replace the prospectus or other legal documents on financial products that may be referred to herein. If necessary, please consult the UCITS prospectus/disclosure document and the Key Investor Document (KID) before making a final investment decision, which can only be made after assessing the suitability of the service or financial instrument with respect to the profile identified with the MiFID questionnaire. Only the most recent version of the fund's prospectus, regulations, Key Investor Document, annual and semi-annual reports may be used as a basis for investment decisions. This document constitutes neither an offer nor a solicitation to buy, subscribe or sell financial products or instruments or a solicitation to make investments. Ersel has carefully reviewed all information presented in this document and made efforts to ensure that the content of this document is based on information and data obtained from reliable sources, but does not guarantee its accuracy or completeness and does not assume any liability. Ersel assumes no responsibility for the information, projections or opinions contained herein and shall not be liable for any use that third parties may make of such information or for any losses or damages that may occur as a result of such use. This document may refer to past investment performance: past performance is not indicative of current or future performance. The indications and data on the financial instruments, as provided by the Company, do not necessarily constitute an indicator of the future investment or disinvestment prospects. Any reproduction and/or distribution of this document that is not expressly authorised is prohibited.